

BLDG. 2 BASEMENT PLUMBING FLOOR PLAN

SCALE: 1/8" = 1'-0"

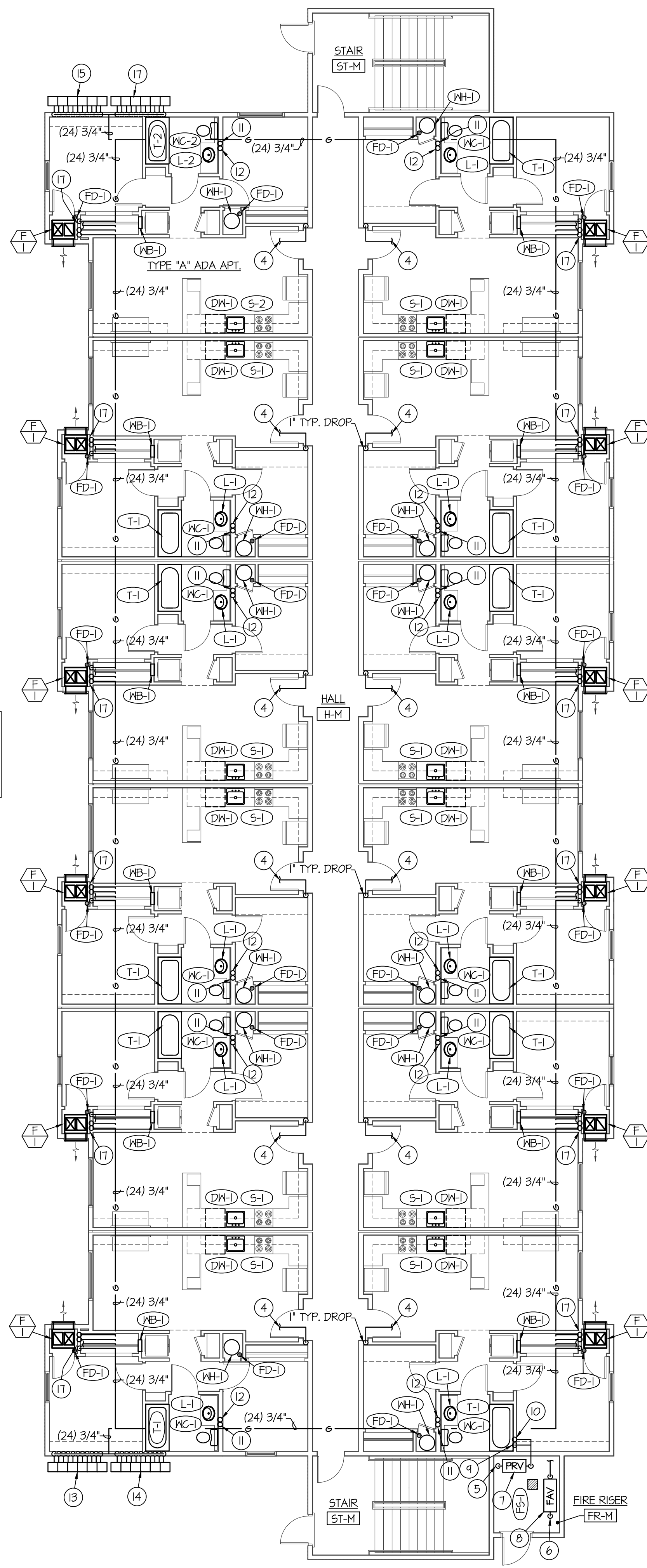


NOTE:

ALL WASTE PIPING SHOWN ON THIS PLAN TO BE RUN UNDER SLAB OF BASEMENT LEVEL. SHOWN HERE FOR CLARITY PURPOSES ONLY. ALL WATER PIPING SHOWN ON THIS PLAN TO BE RUN BETWEEN CEILING OF BASEMENT AND FLOOR OF MAIN LEVELS.

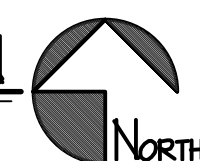
NOTE:

SEE TYPICAL APT. LARGE SCALE PLUMBING FLOOR PLANS ON SHEET P2.0 FOR PIPING AND EQUIPMENT LOCATED IN EACH APT.



BLDG. 2 MAIN FLOOR PLUMBING PLAN

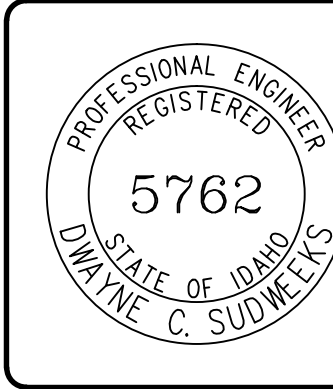
SCALE: 1/8" = 1'-0"



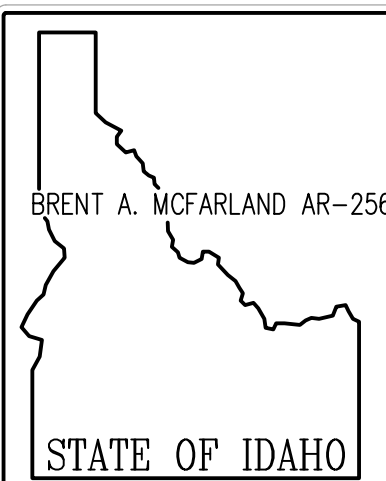
PLAN NOTES:

- SEE CIVIL SITE PLAN FOR CONTINUATION OF 6" SANITARY SEWER.
- SEE CIVIL SITE PLAN FOR CONTINUATION OF 2-1/2" DOMESTIC CW MAIN.
- SEE CIVIL SITE PLAN FOR CONTINUATION OF 6" FIRE LINE.
- SEE TYPICAL LARGE SCALE APT. PLUMBING PLANS ON SHEET P2.0 FOR CONTINUATION OF 1" WATER PIPING SERVING INDIVIDUAL APARTMENTS.
- RISE 2-1/2" CW MAIN UP THRU SLAB TO PRV STATION ABOVE IN RISER ROOM ABOVE.
- RISE 6" FIRE LINE UP THRU SLAB TO FIRE RISER ABOVE IN RISER ROOM.
- WATER PRESSURE REDUCING VALVE ASSEMBLY. SEE DETAIL ON SHEET P3.0
- 6" FIRE RISER ASSEMBLY. SEE DETAIL ON SHEET P3.0
- DROP 2" CW LINE DOWN IN WALL TO SERVE BASEMENT LEVEL APTS. AND MAIN LEVEL APTS.
- RISE 2" CW UP IN WALL TO SERVE 2ND AND 3RD LEVEL APTS. ABOVE. SEE SHEET P1.2 FOR CONTINUATION OF PIPING.
- 4" WASTE STACK UP IN WALL TO 3RD LEVEL FLOOR ASSEMBLY.
- 4" VENT STACK UP IN WALL TO 4" VTR ON ROOF.
- 12 GAS METER TREE BY LOCAL GAS COMPANY. 12 METERS SIZED FOR 50,000 BTU EACH AT OZ. DELIVERY PRESSURE. METER TREE TO SERVE BASEMENT APTS.
- 12 GAS METER TREE BY LOCAL GAS COMPANY. 12 METERS SIZED FOR 50,000 BTU EACH AT OZ. DELIVERY PRESSURE. METER TREE TO SERVE MAIN LEVEL APTS.
- 12 GAS METER TREE BY LOCAL GAS COMPANY. 12 METERS SIZED FOR 50,000 BTU EACH AT OZ. DELIVERY PRESSURE. METER TREE TO SERVE 2ND LEVEL APTS.
- 12 GAS METER TREE BY LOCAL GAS COMPANY. 12 METERS SIZED FOR 50,000 BTU EACH AT OZ. DELIVERY PRESSURE. METER TREE TO SERVE 3RD LEVEL APTS.
- DROP (1) 3/4" GAS LINE DOWN TO BASMENT MECH. CLOSET TO SERVE FURNACE. RUN (1) 3/4" GAS LINE TO SERVE MAIN LEVEL FURNACE AT THIS LEVEL. RISE (2) 3/4" GAS LINES UP IN WALL TO SERVE 2ND AND 3RD LEVEL FURNACES ABOVE. SEE SHEET P1.2 FOR CONTINUATION OF GAS LINES FOR 2ND AND 3RD LEVELS. SEE LARGE SCALE PLUMBING PLANS ON SHEET P2.0 FOR CONNECTION TO FURNACES AND SHUT-OFF VALVES.
- 1-1/4" LAWN SPRINKLER LINE STUB OUT. SEE DETAIL ON SHEET P3.0.
- MAIN WASTE LINE TO BE SLOPED AT 1/8" PER FOOT SLOPE.

ORIGINAL DRAWING SIGNED BY: DWAYNE C. SUDNEEKS
DATE ORIGINAL SIGNED: Jun 19, 2017
ORIGINAL ON FILE AT ENGINEERED SYSTEMS ASSOCIATES
1355 EAST CENTER, POCAHELLO, IDAHO 83201



Engineered Systems Associates
1355 EAST CENTER
POCAHELLO, IDAHO 83201
PHONE: (208) 233-0501
FAX: (208) 233-0529
EMAIL: esa@engsystems.com
ESA JOB NUMBER: 17042



CONSULTANTS:

PROJECT: JUNIPER SANDS APARTMENTS
REIDBURG, IDAHO

DRAWING TITLE: BLDG. 2 BSMT. & MAIN LEVEL PLUMBING PLANS

REVISION:

#	DATE	COMMENT

DRAWN BY: SR	JOB NO: 694
CHECKED BY: DCS	DATE: JUNE 2017

PLOT DATE:

DRAWING NO. FILE: 17042 P13.dwg

P13

OF

-